

# \$579,900 - 355 Pinewind Road Ne, Calgary

MLS® #A2236834

**\$579,900**

4 Bedroom, 3.00 Bathroom, 1,177 sqft

Residential on 0.11 Acres

Pineridge, Calgary, Alberta

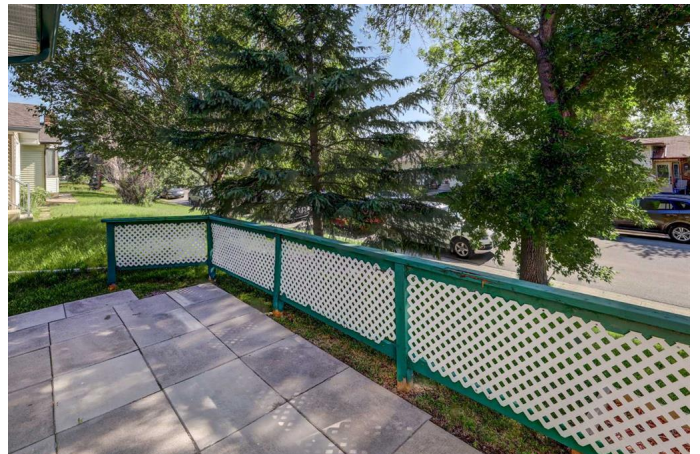
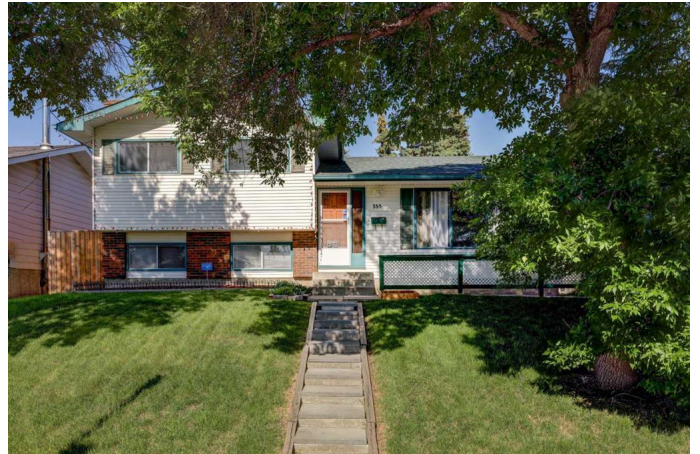
**\*\*\$579,900! RARE OPPORTUNITY â€“  
MOVE-IN READY & IMMACULATELY  
MAINTAINED!\*\***

Welcome to this beautifully updated 4-level split in the heart of **\*\*Pineridge\*\***, lovingly cared for by its original owners for over 40 years. Offering **\*\*1,176 sq ft\*\*** of functional living space above grade and countless thoughtful upgrades, this home is a true standout.

**\*\*FRESH 2025 UPDATES\*\*** include new kitchen flooring and main floor paint, giving the space a modern and inviting feel. Enjoy summer in your **\*\*private outdoor oasis\*\*** featuring a two-tier deck (2024), newer concrete patios and sidewalks (2023), custom planters, and a charming gazeboâ€”perfect for relaxing or entertaining.

Mechanically sound with a **\*\*new furnace motor (2020)\*\***, **\*\*commercial-grade A/C (2019)\*\***, and **\*\*35-year fiberglass shingles with a lifetime warranty (2009)\*\***. Inside, you'll find **\*\*4 spacious bedrooms\*\*** including a main-floor flex room ideal for guests or a home office, along with **\*\*3 full bathrooms\*\***, one of which is a renovated ensuite in the refreshed primary suite.

The basement is fully finished with a large **\*\*family room\*\***, **\*\*games area\*\***, and dedicated **\*\*storage space\*\***. A **\*\*double**



detached garage\*\* offers additional workshop potential, and the \*\*fenced yard\*\* is perfect for kids and pets.

Located in a \*\*prime, family-friendly community\*\*, this home is within walking distance to schools, parks, shopping, restaurants, and the Village Square Leisure Centre. Quick access to \*\*Memorial Drive and Stoney Trail\*\* makes commuting a breeze.

This is your chance to own a meticulously updated and move-in ready home in one of Calgary’s most established neighbourhoods at an unbeatable price!

Built in 1975

**Essential Information**

MLS® #	A2236834
Price	\$579,900
Bedrooms	4
Bathrooms	3.00
Full Baths	2
Half Baths	1
Square Footage	1,177
Acres	0.11
Year Built	1975
Type	Residential
Sub-Type	Detached
Style	4 Level Split
Status	Active

**Community Information**

Address	355 Pinewind Road Ne
Subdivision	Pineridge
City	Calgary
County	Calgary
Province	Alberta
Postal Code	T1Y 2H2

## Amenities

Parking Spaces	2
Parking	Alley Access, Double Garage Detached, Off Street
# of Garages	2

## Interior

Interior Features	Breakfast Bar, Built-in Features, Central Vacuum, Kitchen Island, Open Floorplan, See Remarks, Storage, Dry Bar
Appliances	Dishwasher, Dryer, Microwave, Refrigerator, Stove(s), Washer, Window Coverings
Heating	Forced Air, Natural Gas
Cooling	Central Air
Fireplace	Yes
# of Fireplaces	1
Fireplaces	Basement, Family Room, Wood Burning, Brick Facing
Has Basement	Yes
Basement	Finished, Full, Partially Finished

## Exterior

Exterior Features	Garden, Private Yard, Storage
Lot Description	Back Yard, City Lot, Front Yard, Garden, Gentle Sloping, Rectangular Lot
Roof	Asphalt Shingle
Construction	Vinyl Siding, Wood Frame
Foundation	Poured Concrete

## Additional Information

Date Listed	July 3rd, 2025
Days on Market	11
Zoning	R-CG

## Listing Details

Listing Office	The Real Estate District
----------------	--------------------------

Data is supplied by Pillar 9â„¢ MLS® System. Pillar 9â„¢ is the owner of the copyright in its MLS® System. Data is deemed reliable but is not guaranteed accurate by Pillar 9â„¢. The trademarks MLS®, Multiple Listing Service® and the associated logos are owned by The Canadian Real Estate Association (CREA) and identify the quality of services provided by real estate professionals who are members of CREA. Used under license.